



DRUM TYPE PART/ RUNNER SEPARATOR

Item #115675

INSTRUCTION MANUAL



October 2011
IMS Company
10373 Stafford Road
Chagrin Falls, OH 44023-5296

Telephone: (440) 543-1615
Fax: (440) 543-1069
Email: sales@imscompany.com
Website: www.imscompany.com

CONTENTS

Specifications	i
Description	1
Unpacking	1
Setup and Operation	1
Maintenance	2
Parts Identification Photo	3

SPECIFICATIONS

Drum Construction	extruded and anodized aluminum vanes terminating in aluminum support rings, with an index ring for single-point adjustment
Frame Construction	steel main frame; extruded and anodized aluminum upper frame and side rails; polycarbonate top cover
Infeed and Discharge Components	stainless steel infeed ring and discharge rings; stainless steel infeed chute with adjustable height and angle; aluminum discharge hopper beneath drum
Drive Motor	1/12 hp, variable-speed DC gearmotor with flexible drive coupling and variable speed control
Operating Adjustments	height, angle, speed, infeed chute height and angle, single-point adjustment of gap between vanes
Dimensions	44" long x 25" wide x 29" to 37" infeed and discharge height

DESCRIPTION

The IMS Ultraline Drum Separator uses an angled, rotating, slotted drum to sort molded plastic parts and runners. The smaller piece drops through the drum's adjustable slots into a user-supplied box or conveyor below the discharge hopper. The larger piece remains in the drum and exits through the discharge ring.

The size of the slot is easily adjusted from a single knob. Drum speed and angle, and infeed chute height and angle are also adjustable to provide the best opportunity for complete sorting of the parts and runners.

UNPACKING

Inspect crate that unit was shipped in. Remove machine from crate. Inspect for damage. Report any damage to carrier. If there is damage, save crate for carrier's inspection.

The drum separator needs no assembly, but be sure there is no packaging material stuck in the unit that might interfere with operation.

CAUTION

Rotating drum could cause injury.

- Keep cover in place to run separator.
- Do not wear jewelry, neck ties or baggy clothing around this machine.

CAUTION

Heavy objects could damage separator.

- Do not use for heavy objects.
- Do not stand on separator.

SETUP AND OPERATION

1. Set separator into place at your infeed conveyor. Also set up take-off conveyors or boxes for the smaller piece exiting from the discharge hopper and the larger piece exiting from the discharge ring.
2. Adjust separator height for your infeed conveyor. Also adjust height and angle to match your output conveyors (if used). To adjust height and angle, loosen screws that secure leg brackets to extruded aluminum top frame. Tighten screws after adjustment.

SETUP AND OPERATION (continued)

3. Adjust infeed chute height and angle. Parts dropping into the chute should not hang up, but also should not be flung too far into the drum.
4. Adjust vanes for the part. To do this:
 - a. Loosen the adjusting knob. Open the gap between the vanes until it is bigger than the smaller of the two pieces you are sorting.
 - b. Hold smaller piece in gap between two vanes. Very lightly close the vanes onto the part.
 - c. Slide smaller piece in and out of the gap. Fine-adjust gap as necessary.
5. Set motor speed. Start with a medium setting, then readjust if needed. If the speed is too fast, the smaller piece might not have time to get through the slots.
6. Readjust any setting as needed.

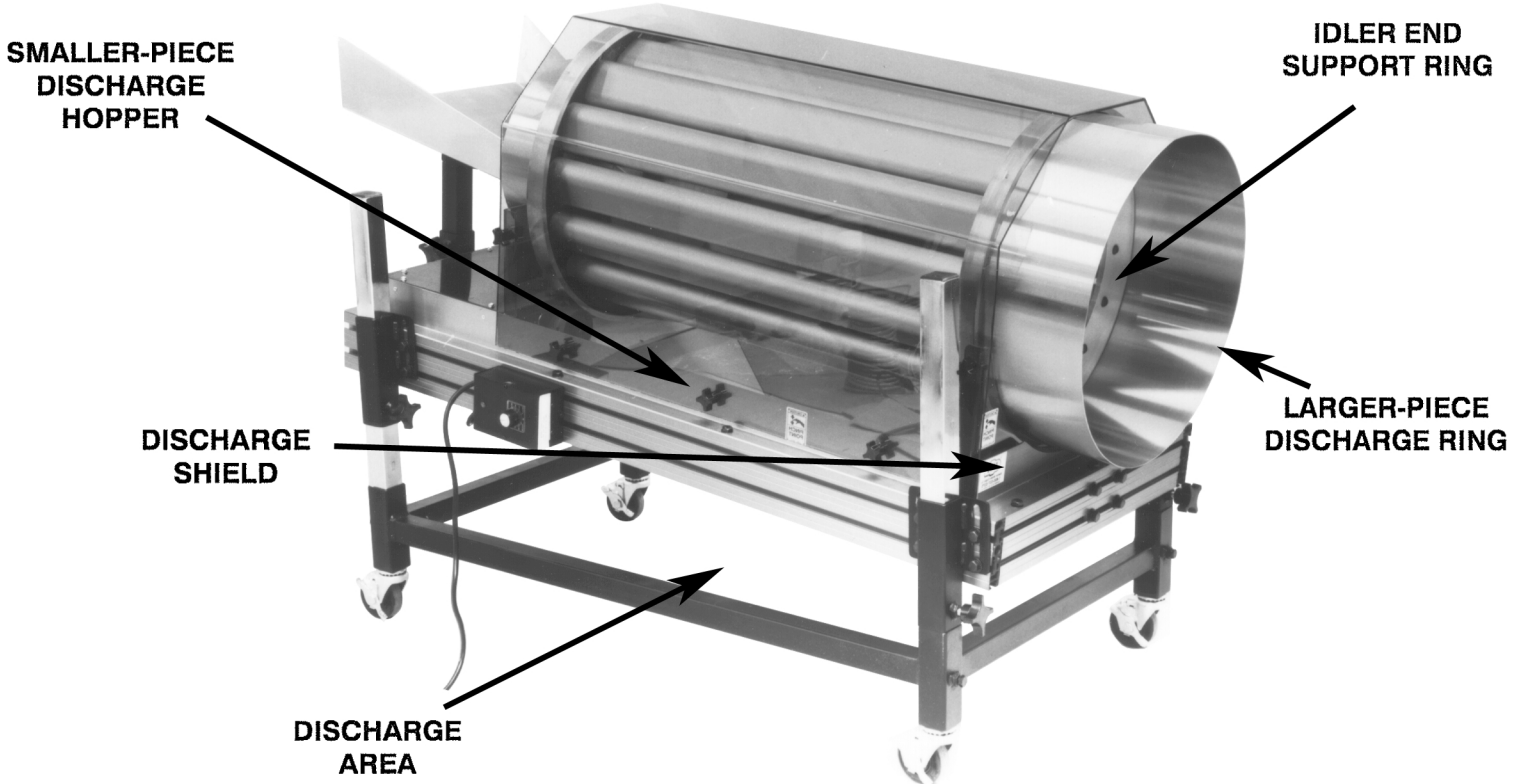
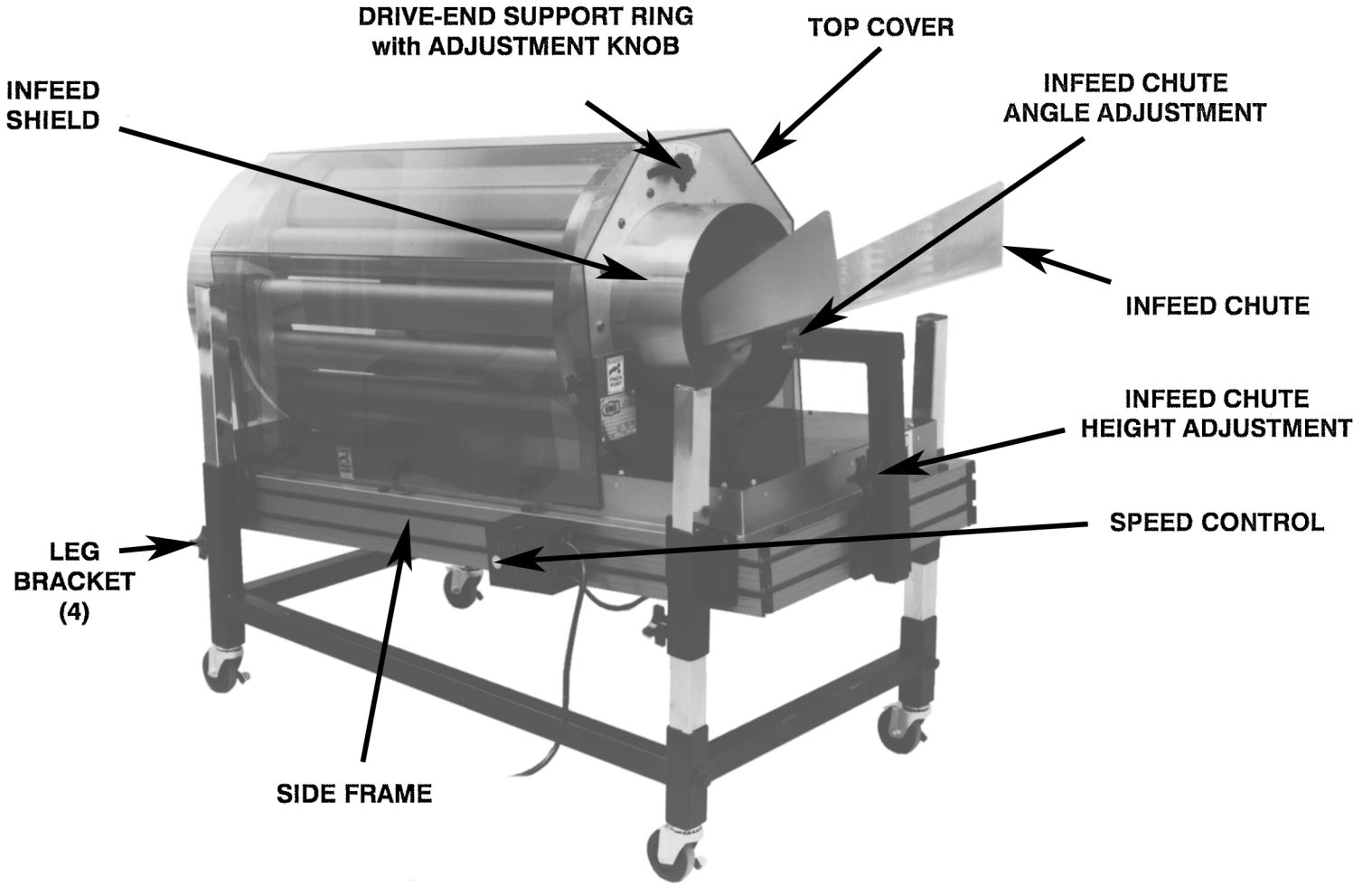
NOTE

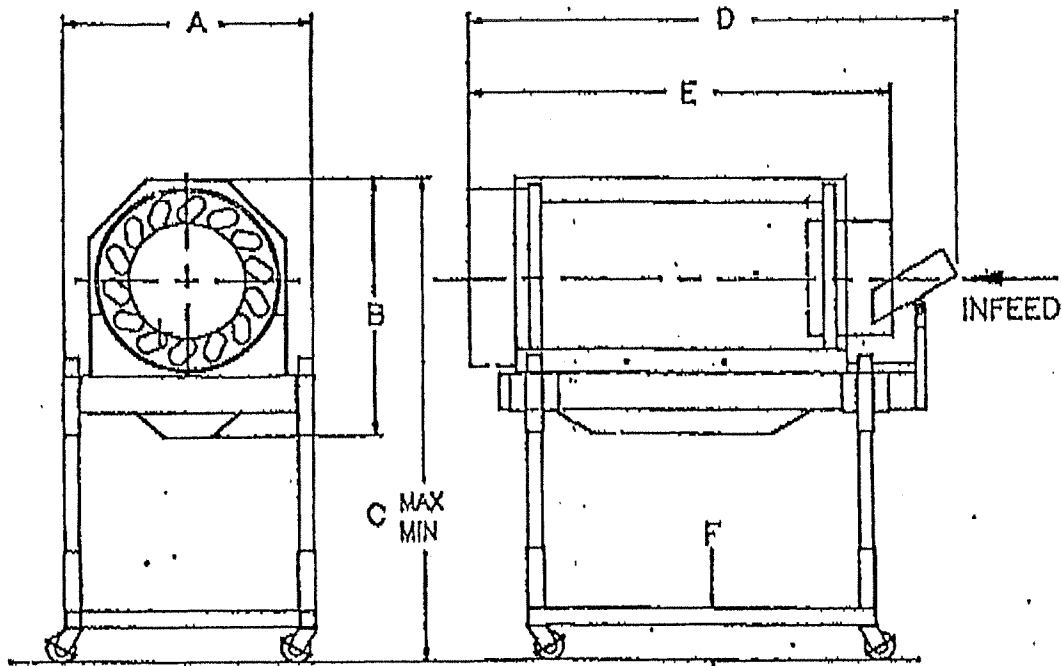
The best way to move the adjustment knob is to tap gently on it with the heel of your hand.

MAINTENANCE

1. Keep separator in good repair. Replace cord if it gets damaged.
2. Keep separator clean.
3. No other scheduled maintenance is needed. Bearings are permanently greased.

IMS Ultraline DRUM SEPARATOR





DIMENSIONS :

- A = 26"
- B = 26"
- C = 50" MAX
42" MIN
- D = 54"
- E = 44"
- F = 6"

FEATURES :

- Steel support frame
- Casters 3" soft rubber swivel with locks
- Stainless steel adjustable infeed chute
- Stainless steel infeed and discharge rings
- Adjustable height and angle
- Enclosed motor and drive
- Removable lexan cover
- Power cord 16-3 with 115v plug
- Pre-wired ready to plug in
- Single point adjustment
- Anodized aluminum hopper

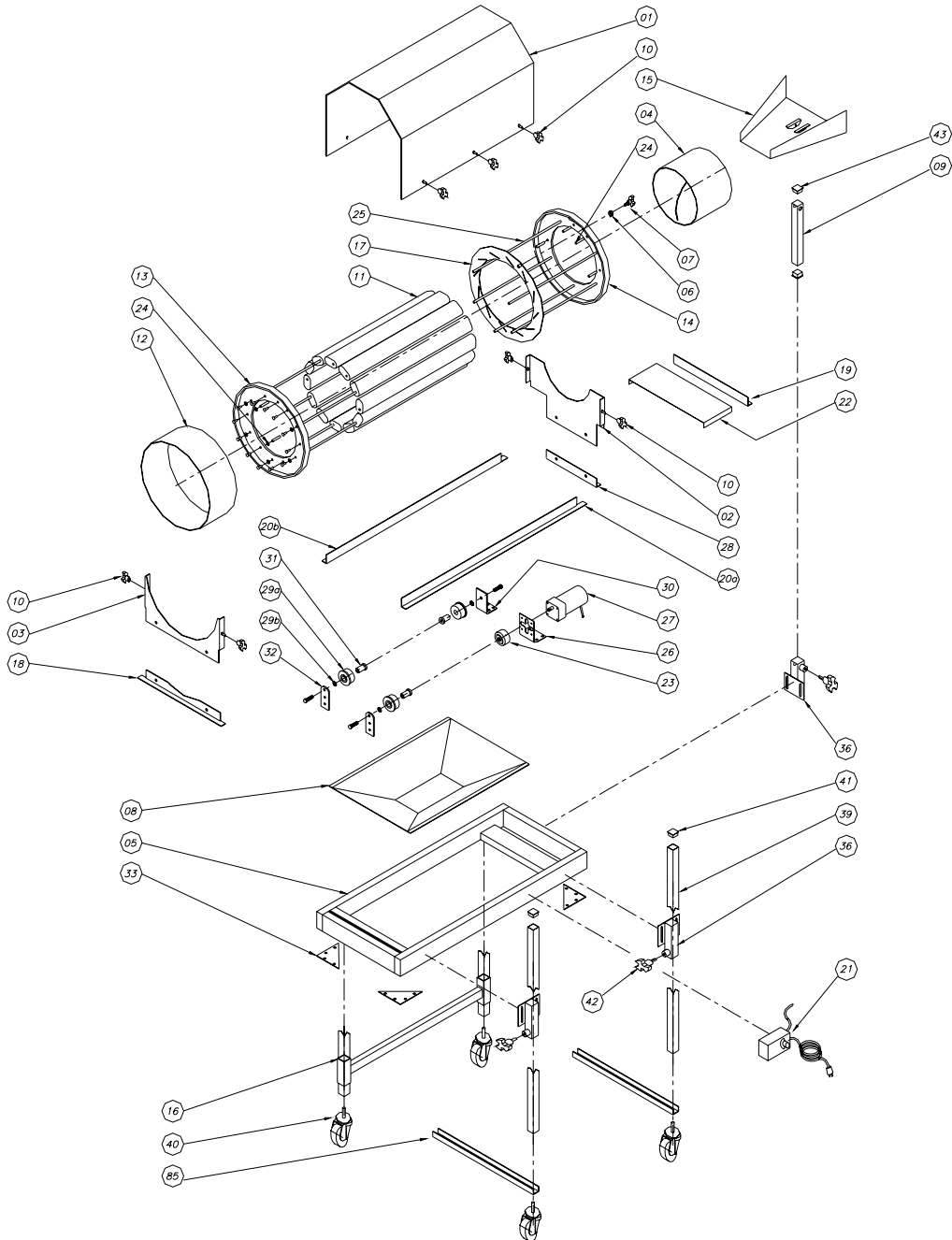
SPECIFICATIONS :

- Bodine 1/12 hp. variable speed DC gearmotor with flexible drive coupling and variable speed control

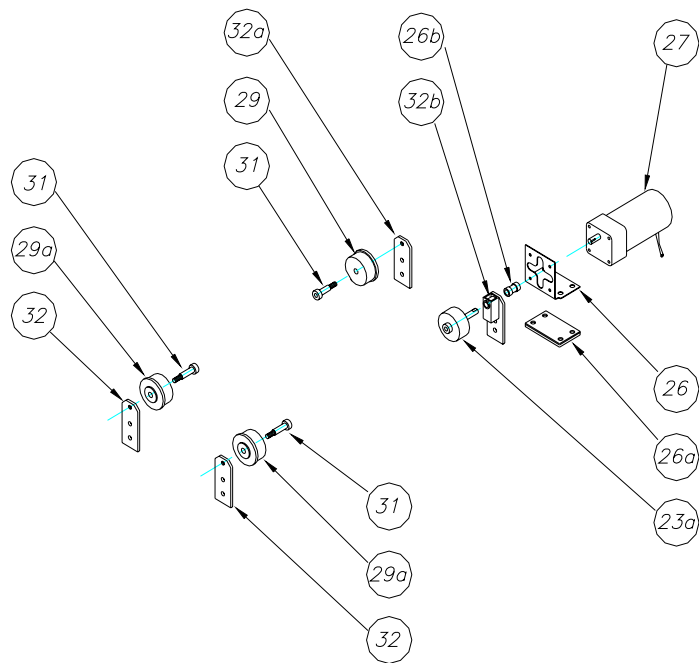
DRUM SEPARATOR PARTS LIST

Key	Part Name	Quantity
01	Lexan cover	1
02	Lexan infeed shield	1
03	Lexan discharge shield	1
04	Stainless Infeed ring assembly	1
05	Frame assembly	1
06	Index ring stop cam assembly	1
07	Index ring knob	1
08	Hopper assembly	1
09	Infeed chute mounting post	1
10	Lexan cover knobs	10
11	Vane assembly	14
12	Stainless discharge ring	1
13	Aluminum Support ring (discharge)	1
14	Aluminum Support ring (infeed)	1
15	Infeed chute assembly	1
16	Leg brace middle	1
17	Index ring assembly	1
18	Front rail	1
19	Rear rail	1
20a / b	Side rail (left or right)	1 / 1
21	Variable speed motor control	1
22	Motor cover	1
23	Drive wheel assembly	1
23a (old design)	Drive wheel assembly	1
24	Vain stub shaft	18
25	Vain full shaft	5
26	Motor mounting bracket	1
26a	Motor bracket spacer	1
27	Motor	1
28	Infeed lexan mounting rail	1
29 (old design)	Idler wheel (drive end)	1
29a	Idler wheel	3
29b	Internal tooth washer	3
32a (old design)	Idler wheel bracket (drive end)	1
32b (old design)	Drive wheel mounting assembly	1
36	Leg bracket assembly	5
39	Leg assembly (specify length)	4
40	Caster	4
41	Leg end cap	4
42	Leg bracket knob	5
43	Leg end cap (modified)	1
85	Leg bottom tie	2

DRUM SEPARATOR PART LOCATION DRAWING



DRUM SEPARATOR DRIVE ASSEMBLY
PRIOR TO 09/10/96



DRIVE WHEEL AND IDLER WHEEL ASSEMBLY CONFIGURATION FOR UNITS PRIOR TO 09/10/96 : WHEN ORDERING PARTS FOR THIS CONFIGURATION A RETRO FIT KIT WILL BE SUPPLIED FOR THE IDLER WHEEL ASSEMBLIES (2) @ DISCHARGE AND (1) @ MOTOR END, ALSO EITHER THE ORIGINAL CONFIGURATION OR A RETRO FIT KIT ARE AVAILABLE FOR THE DRIVE WHEEL ASSEMBLY

NOTES